

Programmes After Market Services NSW-1 Series Transceivers

Transceiver NSW-1 Variants

CONTENTS

	Page No
Foreword	5
Transceiver NSW-1NX	5
Modules	5
Exploded View of Transceiver NSW-1NX	6
Assembly Parts of NSW-1NX (0261802)	6
Quick Guide	8

Foreword

This section of the service manual contains specific details for the NSW-1 handportable telephone variants.

The appendix comprises an exploded view of the NSW-1 variants (including a list of assembly parts) plus component parts lists covering the system module and the display module; and the quick guide, which aims to provide all user information that service personnel are likely to require during servicing and repair of equipment.

NOTE: The Service Manual is intended for use by qualified service personnel only.

NOTE: When assembling the B-cover screws, use 17 Ncm torque.

There will be several custom transceivers (operator labeling, etc.), which are based on NSW-1NX. Varying parts are, EEPROM settings, type label (printing), and co-label.

Transceiver NSW-1NX

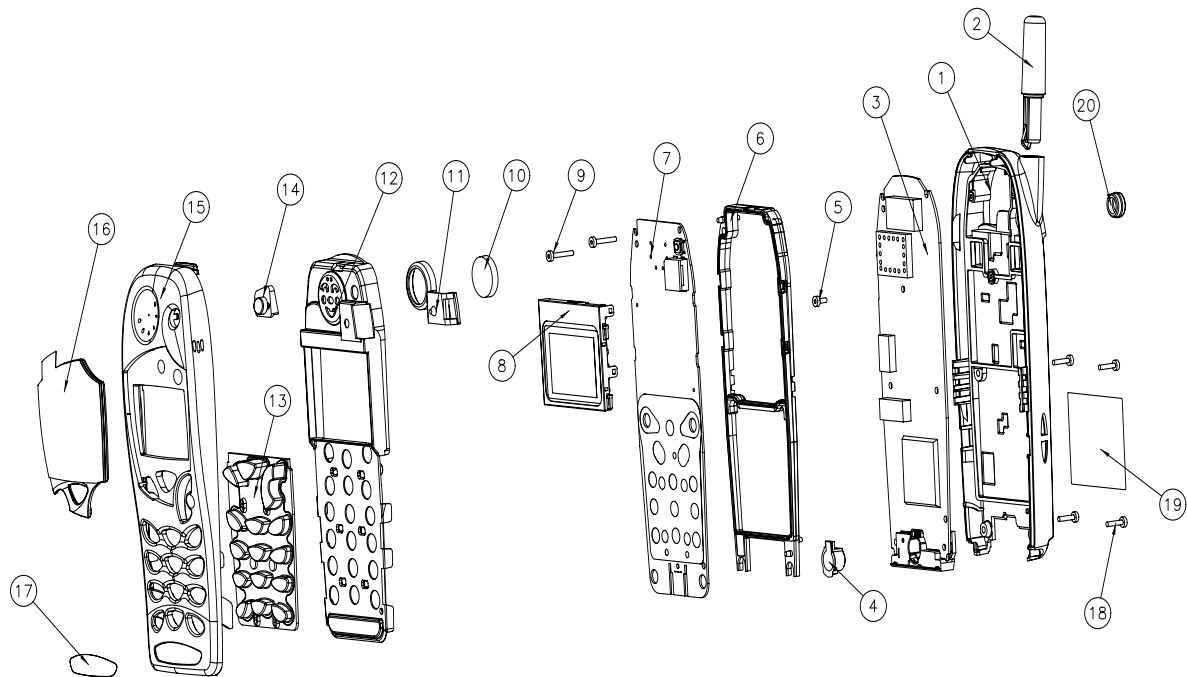
Modules

Unit/type:	Product code:	Module code:
Transceiver NSW-1NX Blue	0504939	
• System/RF Module UT4S		0201301
• display module UE4S		0201360
• mechanics MNSW1		0261802

Unit/type:	Product code:	Module code:
Transceiver NSW-1NX Grey	0504940	
• System/RF Module UT4S		0201301
• display module UE4S		0201360
• mechanics MNSW1		0261802

Unit/type:	Product code:	Module code:
Transceiver NSW-1NX SBC Blue	0504941	
• System/RF Module UT4S		0201301
• display module UE4S		0201360
• mechanics MNSW1		0261802

Exploded View of Transceiver NSW-1NX



Assembly Parts of NSW-1NX (0261802)

ITEM	Q'TY	CODE	DESCRIPTION	VALUE, TYPE
1		9451794	B-cover assy (dual band)	dmc03059
2		0660208	Antenna (dual band)	
3			Radiomodule (dual band)	
4		5140101	Microphone assy	dmc00955
5		6190053	Screw M1.6x4	dmd06635
6		9467028	Interboard frame	dmc01735
7		0201360	UI module	
8		0201366	LCD module	
9	2	6190045	Screw M1.6x10	dmd06162
10		5140067	Speaker	
11		9460215	Transducer gasket	dmd02687
12		9457853	C-cover assy	dmc00946
13		9790452	Keymat facelift assy	dmc03269
		9794044	Santra "i" Hebrew keymat	dmc03527
14		9790475	Power keymat assy	dmc03500
15		9490243	A-cover facelift (Santra Blue)	dmc03541

ITEM	Q'TY	CODE	DESCRIPTION	VALUE, TYPE
15		9451926	A-cover (Santra Gray)	dmc03541
15		9490329	A-cover (Santra SBC Blue)	dmd06680
16		9456923	Window assy	dmc03483
17		9430348	Logo label (digital only)	dmc03559
18	4	6290101	Screw M1.6x7	dmd06364
19		9380529	Continuous sheet	4D25502
20		9451139	Dust cap	dmd02859

Quick Guide

General	
Make a call	Area code, phone number, softkey CALL
End a call	Softkey END
Answer a call	Softkey ANSWER
Clear the display	Press softkey END and hold "C"
Last number redial	Arrow Up (while display is empty)
Lock/unlock keypad	Softkey MENU and *
Adjust earpiece	Scroll ~ or v (during a call)
Emergency services	Emergency number and softkey CALL

Memory	
Store a number (in first available location)	Menu, Select, Add Entry Enter name, OK, Enter number, OK
Search for a number or name	Arrow down

Menu	
Enter menu	Softkey MENU
Scroll functions	~ or v
Select displayed function	Select
Scroll options	~ or v select option, OK
Shortcut (see list below)	MENU, function number
Exit menu	Press "C"